

commissioned by Chorus Pro Musica

Spencer the Rover

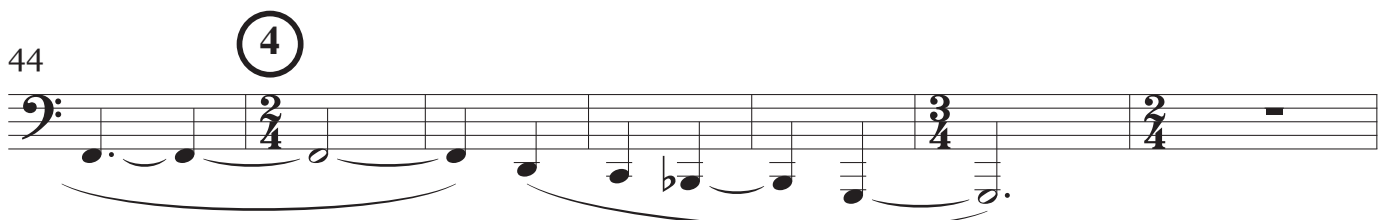
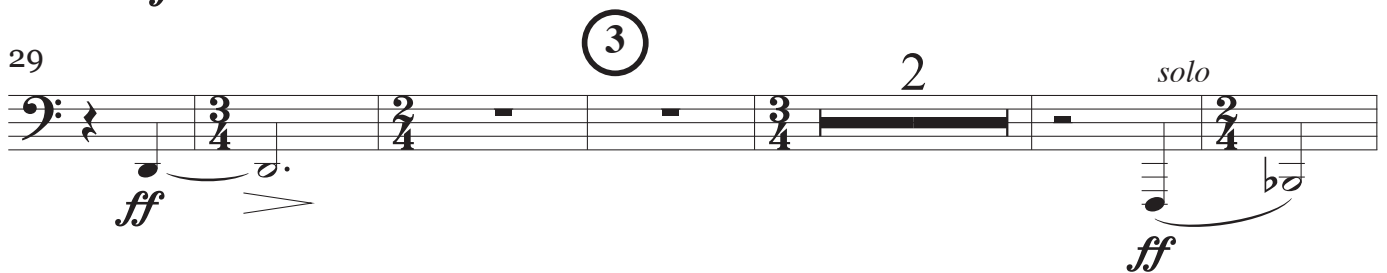
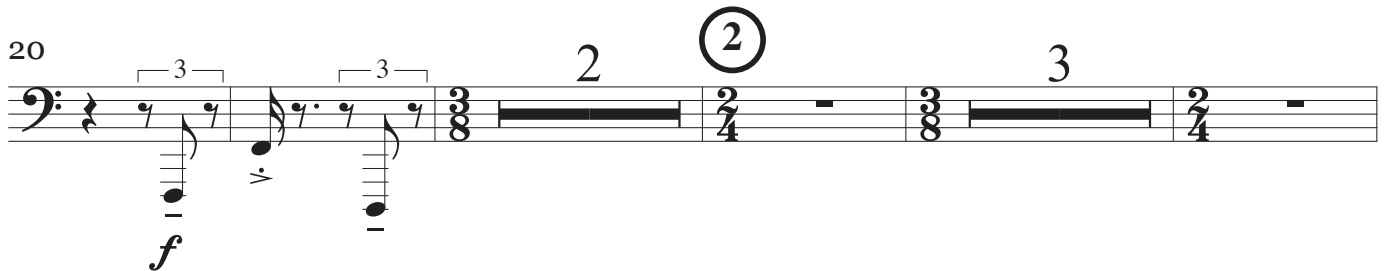
in memory of Mark Vores (1927 – 2015)

ANDY VORES

(2015)

Prelude

♩ = 120c. *bright*



51 ⑤

60 ⑥

68

75 ⑦

94 ⑧

1st Narration

104 $\text{♩} = 82c.$

112 ⑨

120 ⑩

TUBA

134 **(11)** 2

mp *f*

143 **(12)** 4

Trombones

mp *f*

160 **(14)** 4

p *mf* *p* *mf* *p*

1st Depiction

171 ♩ = 96c. *trudging*

mf *p*

179 **(15)** 2

mfp *mf* *mf*

194

Euphonium

pp *p*

200 **(17)**

p *pp*

207 **(18)**

p *pp*

216

19

Musical staff for measure 216, bass clef, showing a sequence of notes with rests.

224

Musical staff for measure 224, bass clef, featuring a triplet of notes and a triplet of rests.

2nd Narration

♩ = 82c. *hushed*

232

20

Musical staff for measure 232, bass clef, with a triplet of notes, a triplet of rests, and a group of four notes. *ppp* dynamic marking is present.

244

21

Musical staff for measure 244, bass clef, with a group of four notes, a 2/4 time signature change, and a group of two notes. *ppp* dynamic marking is present.

256

22

Musical staff for measure 256, bass clef, with a group of two notes, a group of three notes, and a group of four notes. *ppp* dynamic marking is present.

267

23

Musical staff for measure 267, bass clef, with a group of three notes and a group of four notes.

▽
10"

275

(♩ = 82c.)

Musical staff for measure 275, bass clef, with a group of four notes and a 3/4 time signature change. *gl.* dynamic marking is present.

Trombones

1st Sensibility

▽
20"

277

▽
20"

278

②④ ▽
12"

②⑤

♩ = 60c. *restrained*

279

313 ②⑦

Washboard *p* *mf*

323 ②⑧

341 ③⑩

pp

*) *breath noise*

345

③①

♩ = 96c. *intense*

③②

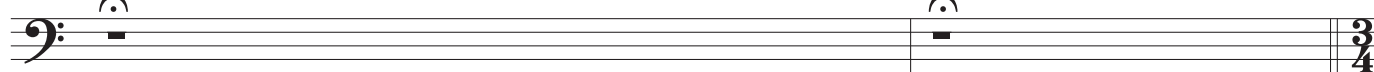
③③

③④

349

35 

513 **16"** **8"**



Chorus: *sss, tss, tah, vvv, ahh, zzz* – variously

G.P.

36 ♩ = 96c.

515 **2** **2**




Cornets

523 **3** 37 **4** Trombones



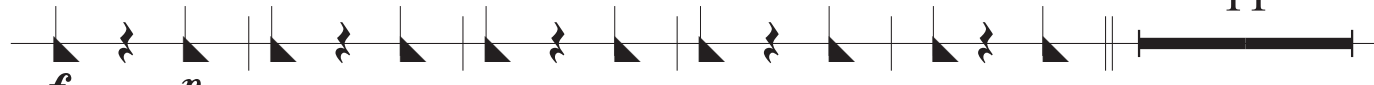
Trombones

535 **3** **3** **2** *) hand clap



ff

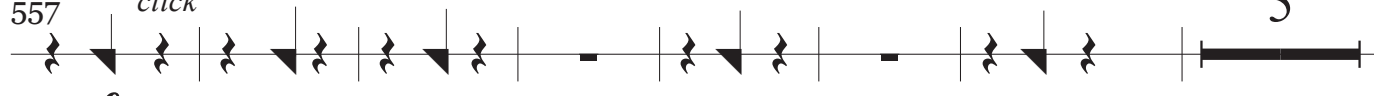
541 **11** **39** ♩ = 82c.



f *p*


40 *) finger click

557 **5**




f

569 41 16 42 4 3 43 3



596 3 44 ♩ = 120c. 8 2 45 ♩ = 82c. deliberate 2



TUBA

611 11 (46)

Cornet Euphonium Cornet

625 Euphonium Cornet Euphonium 3

631 (47) 2 2 2 3

Bass Trombone

643 (48) 9

Euphonium

ppp

3rd Narration

660 ♩ = 96c. *glowing*

5 (49)

670 *f* (50)

677 (51)

f *mf* *p sub.* *f* *p sub.*

685

mp *mf* *p*

2nd Depiction

692 ♩ = 120c. *poco stringendo*

mf

698 (52) *firmly*

f *ff*

704 (53) *accel.* _____ *tempo* _____ *ritardando* _____

Euphonium

4th Narration

broadly ♩ = 96c.

715

ff *f*

721 (54)

730 *f* *ff*

733

737 (55)

mp 4 2

2nd Sensibility

(♩ = 96c.)

746 (56) *) *finger click*

f 4 5

749 (57)

TUBA

*) hand clap

761 *f* **2** **(58)** *mf pp*

766 *poco* **3** *f*

(59)

♩ = 120c. *lightly*

771 **7** **10** **3** **(60)** **3**

794 **2**

801 **2**

(61)

ritardando

808 *Cornets*

(62)

tempo ♩ = 82c.

814 ♩ = 66c. *Flugelhorn*

821 *molto rit.*

f *fff*

(63)

830 ♩ = 60c. *ff* *p*

64

838

Washboard

Woodblock

842

Sandpaper Blocks

848

Cymbals

Final Narration

♩ = 96c. *simply*

855

Horns

Trombone 1

864

Trombone 3

mf

mf

871

Trombones

66 6 67 10 68

892

3 69 10

p

mf

TUBA

909 **70**

f *p* *mp*

71

rallentando *a little slower* ♩ = 88c.

916

pp *mf*

slower ♩ = 76c.

934

Euphonium *mf* *p*

a little faster ♩ = 88c. ♩ = 96c. *crisply*

944

mf *p*

950

f

75

warmly

955

mf *mf*

76

960

f *p*

967

f *mf*

975 **(77)** *ritardando*
 2
 mp *f*

981 **(78)** 9 **(79)** *plainly*
 2
 Cornet 3

996 **(80)** 3
 p mp

(81) 2 4
 Euphonium

(82) 3
 mp p

(83) 3

molto molto ritardando _____ *very, very slow* ♩ = 30c.
 4 2
 ppp